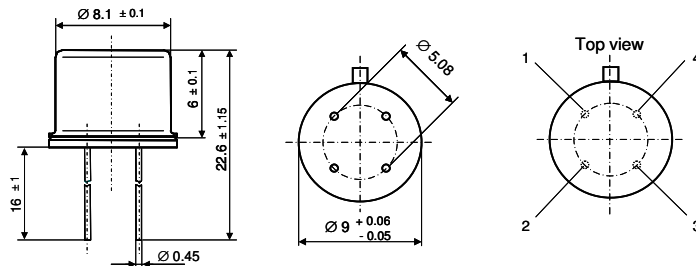


Technical Data

Gas sensor	GG5: Single sensor
Type of sensor	4: Sensor for ammonia, with low cross sensitivity to CH ₄ , CO and H ₂
Chip	3: Size = (3.0 x 3.0) mm ²
Heater resistance at 0 °C	3: R _{H0} = (10.0 ± 0.5) Ω
Class of accuracy	0: R _{S0} = ± 75 %, R _S /R _{S0} = ± 30 %
Housing	T: Sensor in a TO39-housing with a stainless steel cap

Dimensions



Pin assignment

Pin 1, 4 ... Heater; Pin 2, 3 ... Sensitive layer

Operating parameters

Temperature T_H = (470 ± 15) °C
 Heater resistance R_H = (27.1 ± 1.4) Ω
 Power rating P_H ≈ 970 mW (Heater voltage U_{Hstat} = 5.1 V)

Sensor parameters

Basic resistance R_{S0} = (40 ± 30) kΩ
 Measurement voltage U_S < 250 mV

Conformity

2002/95/EC Restriction of the use of Hazardous Substances Directive (RoHS)

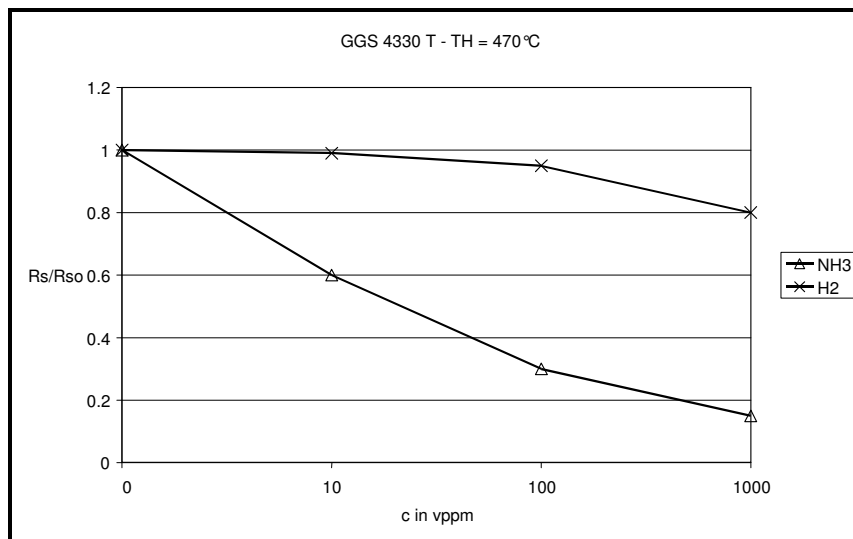


Figure 1: Sensitivity characteristics to impact at NH₃ and H₂

Made in Germany

