

Technical Data

Gas sensor

GG5: Single sensor

Type of sensor

3: Sensor for hydrocarbons, optimal for C1...C8 hydrocarbon, especially suitable for stationary observation of LEL

Chip

3: Size = (3.0 x 3.0) mm²

Heater resistance at 0 °C

3: R_{H0} = (10.0 ± 0.5) Ω

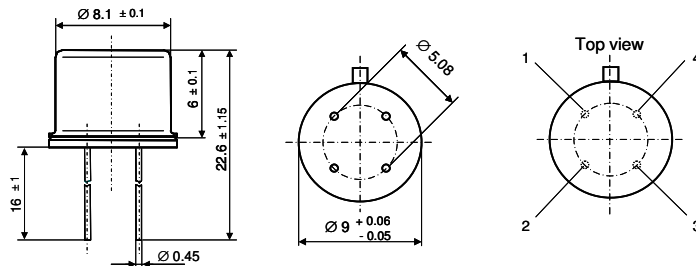
Class of accuracy

0: R_{S0} = ± 75 %, R_S/R_{S0} = ± 30 %

Housing

T: Sensor in a TO39-housing with a stainless steel cap

Dimensions



Pin assignment

Pin 1, 4 ... Heater; Pin 2, 3 ... Sensitive layer

Operating parameters

Temperature T_H = (420 ± 15) °C

Heater resistance R_H = (25.4 ± 1.3) Ω

Power rating P_H ≈ 815 mW (Heater voltage U_{Hstat} = 4.5 V)

Sensor parameters

Basic resistance R_{S0} = (50 ± 30) kΩ

Measurement voltage U_S < 250 mV

Conformity

2002/95/EC Restriction of the use of Hazardous Substances Directive (RoHS)

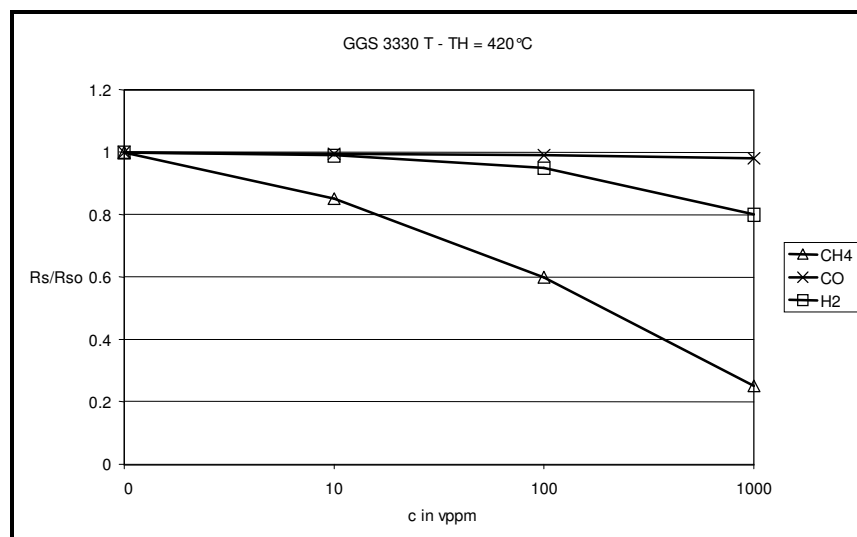


Figure 1: Sensitivity characteristics to impact at CH₄, CO and H₂

Made in Germany



ISO/TS 16949:2002
Reg.-Nr. 79 111 0007