

## ME4-H<sub>2</sub> Gas Sensors Manual

### 1 Feature

ME series H<sub>2</sub> sensors have low consumption , small size, high sensitivity, wide range of linearity , and better anti-jamming capacity, good reproducibility, stability and reliability ect advantage. It is electrochemical sensor widely suits for industry and environmental protection field ect .



### 2 Application

Type	Detecting GAS	Application	Remark
ME4-H <sub>2</sub>	H <sub>2</sub>	Detecting H <sub>2</sub> in industry and environmental protection field	

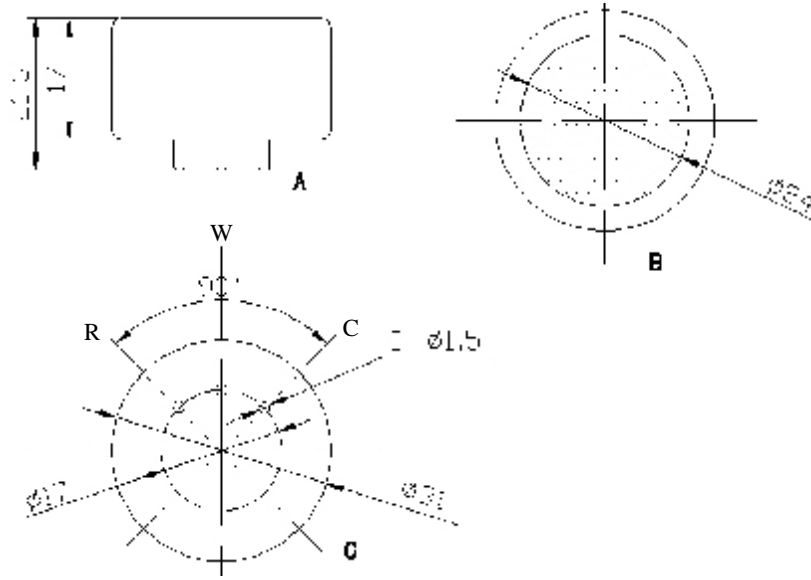
### 3 Feature

#### 3.1 Parameter

##### 3.1.1 Basic feature

Type	ME4-H <sub>2</sub>		
			Remark
Measurement Range	0-500ppm	0-1000ppm	
Sensitivity(μA/ppm)	0.05±0.01	0.03±0.01	
Reproducibility	Output signal±2%	Output signal±2%	
Response time(t <sub>90</sub> ) s	≤30	≤30	
Signal attenuation	≤2%	≤2%	/month
Zero drift (ppm)	-10~10	-10~10	Clean air
Temperature range (°C)	-20~+50	-20~+50	
Temperature drift (ppm)	≤10	≤10	20~50°C
Humidity range	≤95%RH	≤95%RH	
Pressure range (kPa)	90~110	90~110	
Storage temperature (°C)	0~20	0~20	Recommendati
Storage period (month)	6	6	
Anticipated using life (month)	>24	>24	
Max detecting concentration	1000	2000	

### 3.1.2 Products external dimension



A—left view    B—planform    C—upward view

Chart 1. products external dimension

### 3.2 Gas sensitivity

#### 3.2.1 ME4-H<sub>2</sub> type electrochemical sensor concentration response characteristic curve

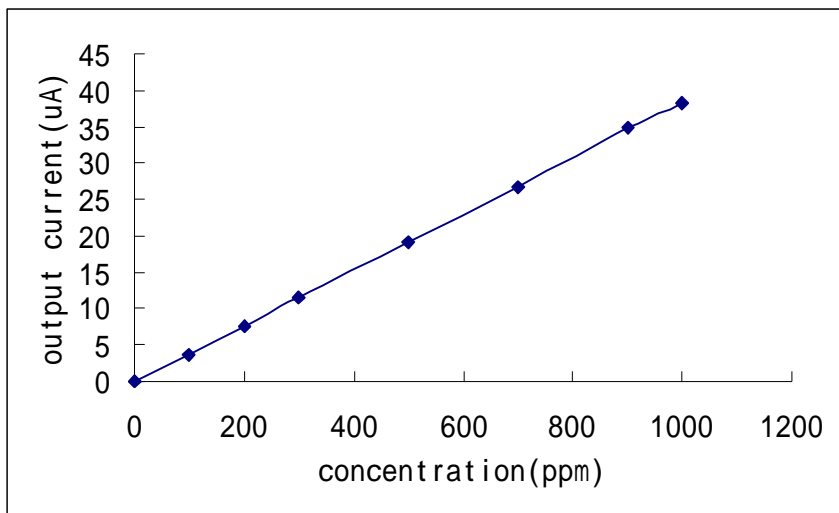


Chart 2 .sensitivity curve

### 3.2.2 ME4-H<sub>2</sub> type electrochemical sensor response 、resume time and output current relation curve

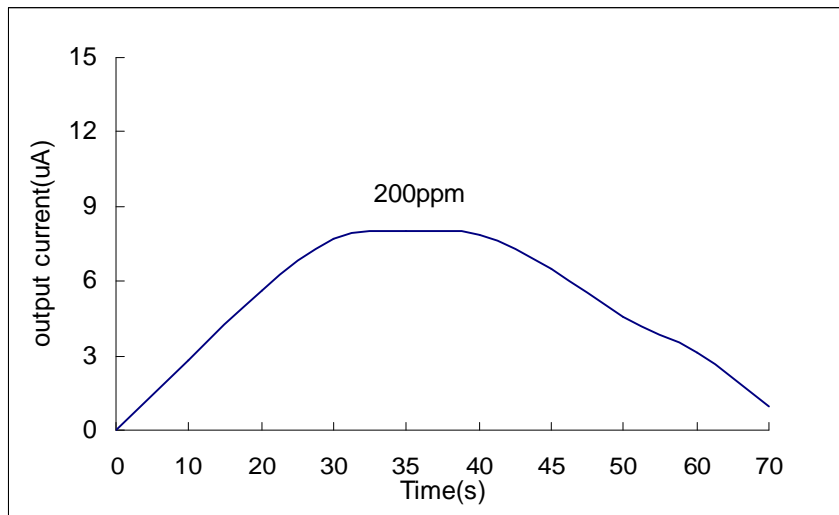


Chart 3.response and resume curve

### 3.2.3 Temperature characteristic

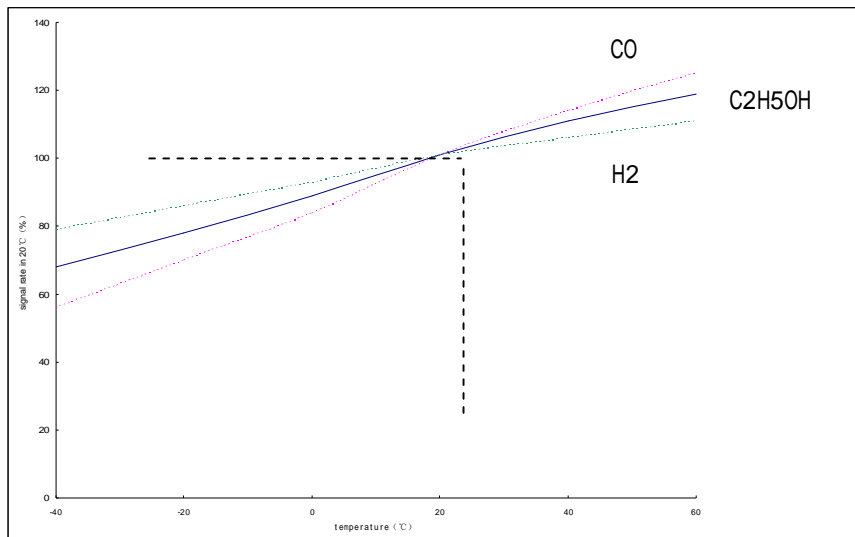


Chart 4. temperature curve