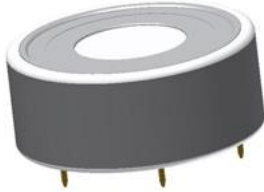


3H2-1000 Electrochemical H2 Sensor

Key Features & Benefits

- *Low Power Consumption
- *High Precision
- * High sensitivity
- *Wide Linear Range
- *Excellent Repeatability and Stability



Applications

Energy, Electric Power, Petrochemical, Environmental Protection, Mining, Agriculture, Smart Home, etc.

Technical Specification

MEASUREMENT

Principle	3-electrodes electrochemical
Range	0-1000ppm
Maximum Overload	2000ppm
Sensitivity	0.03 ± 0.01 (uA/ppm)
Response Time (T90)	< 30seconds
Baseline Offset (20°C)	-1 ~ 3ppm
Zero Drift (-20°C-40°C)	< 9ppm
Repeatability	1% of signal
Output Signal	Linear
Long Term Output Drift	< 0.5% signal/month

ELECTRICAL

Recommended Load Resistor	10 Ω
Bias Potential	not required

ENVIRONMENTAL

Working Temperature Range	-20°C ~ 50°C
Working Pressure Range	90 ~ 110 kPa
Working Humidity Range	10% - 90% (not condensing)
Storage Temperature Range	0 ~ 20°C

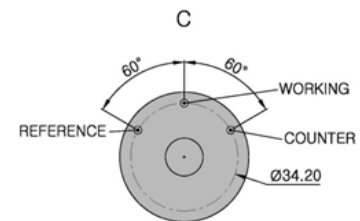
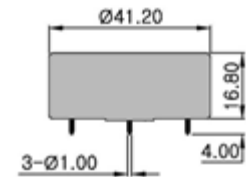
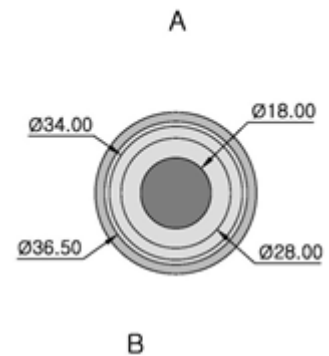
LIFETIME

Storage Life	6 months
Expected Operating Life	3 years in air
Warranty	18 months

PHYSICAL CHARACTERISTICS

Weight	11g
Orientation Sensitivity	None

Product Dimension



- Notes: 1 All dimensions in mm
 2 All tolerances ±0.15mm unless otherwise stated.

3H2-1000 Electrochemical H2 Sensor**Cross-Sensitivity Data**

- Notes:** 1. All performance data is based on condition at 20°C, 50%RH & 1013mbar. For sensor performance data under other conditions, please contact us.
2. Connection should be made via PCB sockets only. Soldering to the pins will seriously damage the sensor

Gas	Concentration Used (ppm)	3H2-1000 (ppm H2)
CO	100	60

Precautions:

- 1 .The sensor should be prevented from organic solvents or corrosive gases
- 2 .The sensor should not be stored in dusty, dirty areas and anaerobic environment
- 3 .The sensor must not be exposed to very high concentration of the analyte permanently
- 4 .Excessive shock or vibration should be prevented to avoid internal damage
- 5 .The pins should not be broken or bent
- 6 .The working and reference electrodes should be in short-circuit condition in storage

**ProSense Technologies Co.,Ltd**

Add: Room 206, Building 4, LianJian S&T Park,
Longhua District, Shenzhen, China

Tel: +86-755-36690079

E-mail: sales@szprosense.com