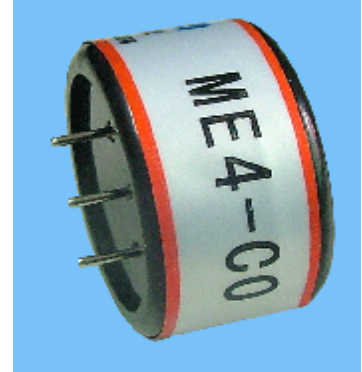


ME4-CO Gas Sensors Manual

1 Feature

ME series CO sensors have low consumption, small size, high sensitivity, wide range of linearity, and better anti-jamming capacity, good reproducibility, stability and reliability ect advantage. It is electrochemical sensor widely suits for mine, industry and environmental protection field ect .



2 Application

Type	Detecting Object	Use	Remark
ME4-CO	CO	Detecting CO in industry, mine and environmental protection field	

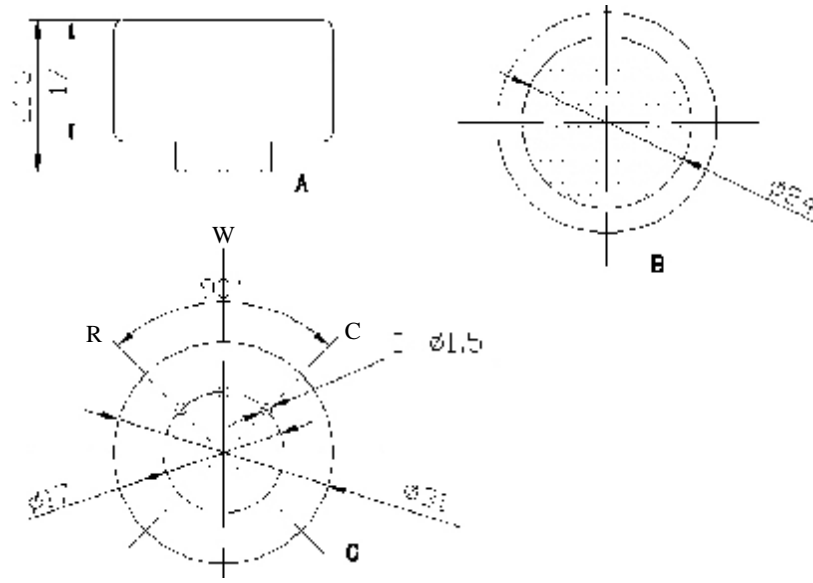
3 Feature

3.1 Parameter

3.1.1 Basic feature

Measurement Range	0-500ppm	0-1000ppm	remark
Sensitivity(μ A/ppm)	0.10 \pm 0.02	0.06 \pm 0.02	
Reproducibility	Output signal \pm 2%	Output signal \pm 2%	
Response time(t_{90}) s	\leq 30	\leq 30	
Signal attenuation	\leq 2%	\leq 2%	/month
Zero drift (ppm)	-5~10	-5~10	Clean air
Temperature range (°C)	-20~+50	-20~+50	
Temperature drift (ppm)	\leq 10	\leq 10	20~50°C
Humidity range	\leq 95%RH	\leq 95%RH	
Pressure range (kPa)	90~110	90~110	
Storage temperature (°C)	0~20	0~20	recommendatio
Storage period (month)	6	6	
Anticipated using life (month)	>24	>24	
Max detecting concentration	1000	2000	

3.1.2 Products external dimension



A—left view B—planform C—upward view

Chart 1. products external dimension

3.2 Gas sensitivity

3.2.1 CO Electrochemical sensor concentration response characteristic curve

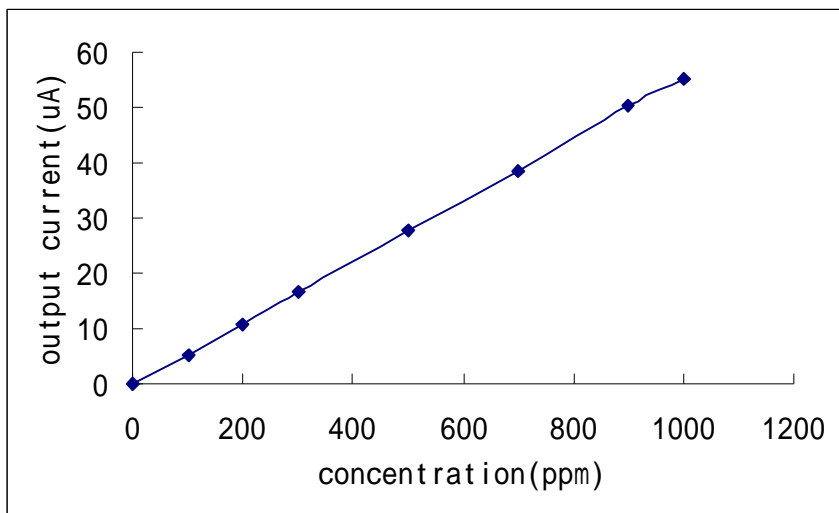


Chart 2 .sensitivity curve

3.2.2 ME4-CO type electrochemistry sensors' response, resume time and output current relation curve

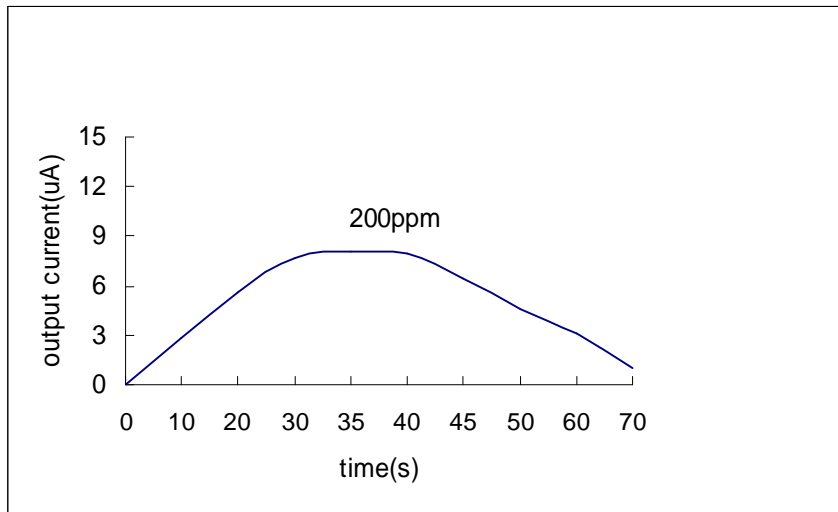


Chart 3.response and resume curve

3.2.3 Temperature characteristic

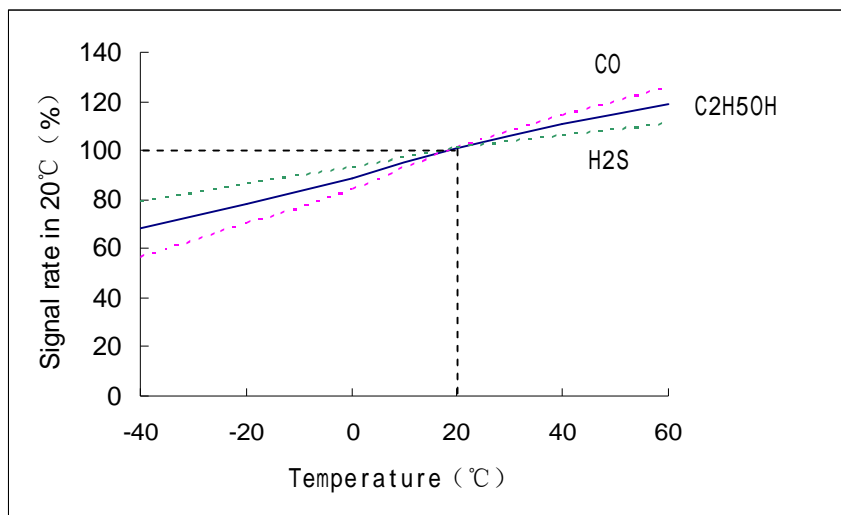


Chart 4. Temperature curve